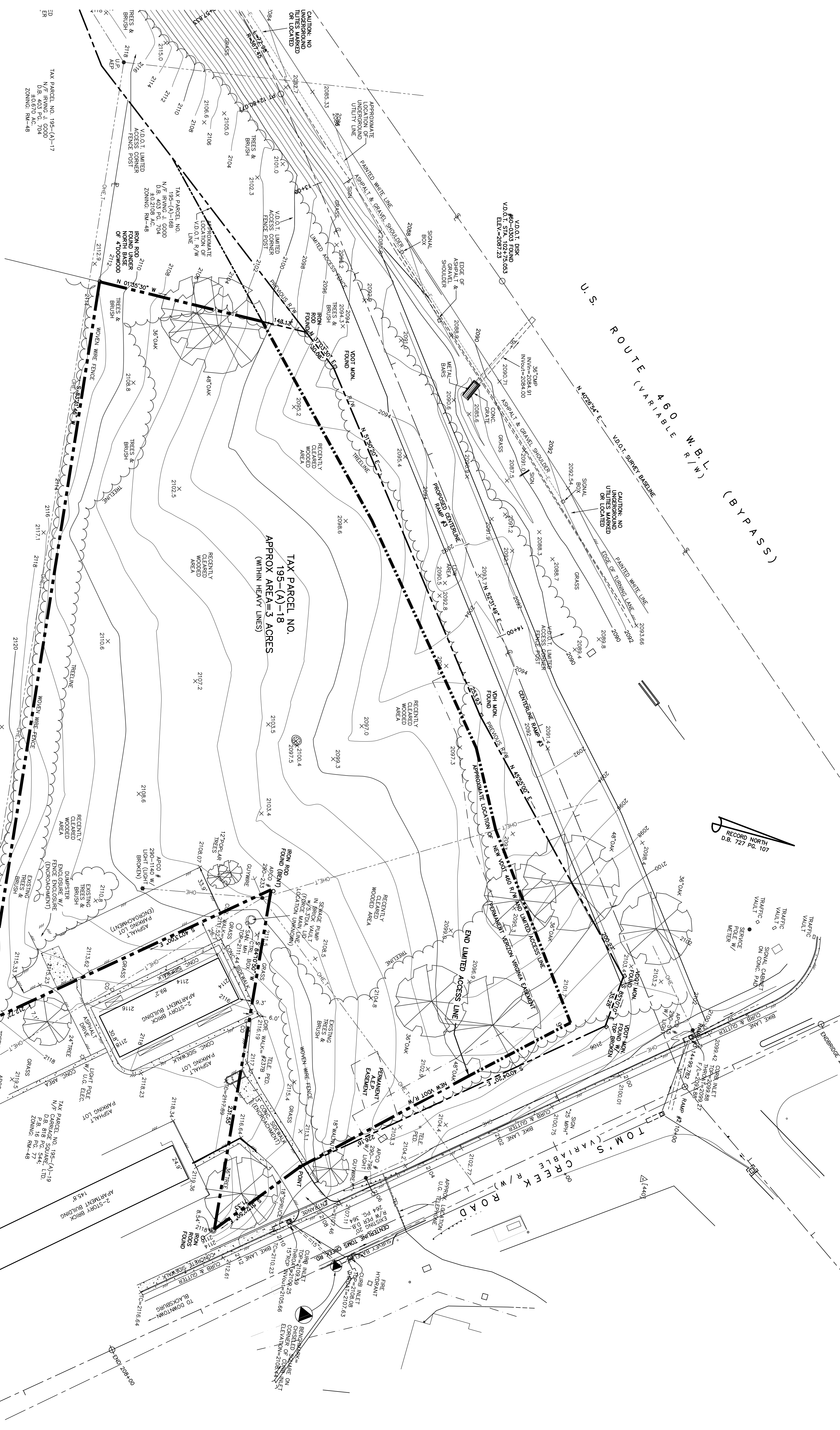


U.S. ROUTE 460 W.B.L. (BYPASS)
V.D.O.T. SURVEY BASELINE
N 45°25' E

RECORD NORTH
D.B. 727 PG. 107



TAX PARCEL NO. 195-(A)-17
N/F IRVING, J. GOOD
D.B. 403 PG. 704
ZONING: RM-48

TAX PARCEL NO. 225-(A)-32
N/F OAKBRIDGE WEST, L.L.C.
M.O.P. (FORMERLY) GRADERS
MEADOW D.B. 850 PG. 179;
P.B. 6 PG. 161
ZONING: RM-48

TAX PARCEL NO. 225-(A)-1
N/F SHAWNEE SIMS CLUB, INC.
D.B. 911 PG. 29
ZONING: CC-39

